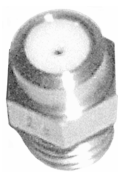


## RECAMBIOS ELECTROEROSION –ONA-

### GUIA HILOS DIAMANTE



ERO 0101



ERO 0102



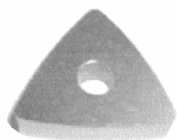
ERO 0103



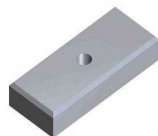
ERO 0104

REF.	DESCRIPCION	REF. FABRICANTE
<b>ERO 0101</b>	Guia Hilo Superior diamante	AE 6999004
<b>ERO 0102</b>	Guia Hilo Inferior diamante	AE 6999003
<b>ERO 0103</b>	Guia Hilo Superior diamante	E69200039R00
<b>ERO 0104</b>	Guia Hilo Inferior diamante	E69200040R00

### CONTACTO METAL DURO



ERO 001



ERO 0020



ERO 0021



ERO 0030

REF.	DESCRIPCION	REF. FABRICANTE
<b>ERO 0010</b>	Contacto Superior e Inferior 23,5x23,5x6,3	AE 6699003
<b>ERO 0020</b>	Cuchilla corte móvil	AE 6699004
<b>ERO 0021</b>	Cuchilla corte fija	AE 6699005
<b>ERO 0030</b>	Contacto Inferior y Superior 16X8XØ6,35	AE 6699012

### BOQUILLAS PLASTICO



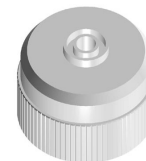
ERO 0210



ERO 0211



ERO 0219



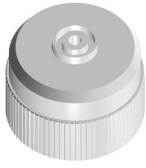
ERO 0225

REF.	DESCRIPCION	REF. FABRICANTE
<b>ERO 0210</b>	Boquilla plástico diám. 6,- Prima E250 ( antigua)	E 8311210
<b>ERO 0211</b>	“ “ “ 6,- PARA 30º CONICO	E 8311211
<b>ERO 0219</b>	“ “ “ 4,- Prima E250	E 8311219
<b>ERO 0225</b>	“ “ “ 6,- Prima EA250	E 8311225



# RECAMBIOS ELECTROEROSION –ONA-

## BOQUILLAS PLASTICO



ERO 0279



ERO 0315



ERO 0327



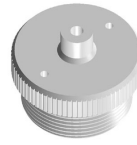
ERO 0345



ERO 0317



ERO 0318



ERO 0364

REF.	DESCRIPCION	REF. FABRICANTE
<b>ERO 0279</b>	Boquilla plástico diàm. 4,- Prima EA250	E 8311279
<b>ERO 0315</b>	“ “ “ 6,- “ “	E 8311315
<b>ERO 0327</b>	“ “ “ 6,- “ “	E 8311327
<b>ERO 0345</b>	“ “ “ 4,- Prima E250	E 8311345
<b>ERO 0317</b>	“ “ “ 6,- Prima SA 400	E 8311317
<b>ERO 0318</b>	“ “ “ 6,- Prima E250	E 8311318
<b>ERO 0364</b>	“ “ “ 4,- Prima SA400	E8311364

